



- Please study these instructions carefully before installing your new Throttle Kicker kit. If you have any questions or problems, do not hesitate to contact our Technical Hotline at: (800) 416-8628 from 7:00 am to 5:00 pm, Monday through Friday, Pacific Standard Time or e-mail us at: edelbrock@edelbrock.com.
- APPLICATIONS
Edelbrock Throttle Kicker Bracket #1997 is an adapter to connect a factory vacuum operated throttle kicker to Edelbrock Q-Jet carburetor #1903. This applies to 1980-1985 350, 400 and 454 c.i.d. engines in 3/4 and one-ton trucks with heavy duty chassis and hot air choke. If original equipment carburetor has factory cruise control, use the original stud and nut instead of included hardware. Figure 1 shows typical installation on Q-Jet carburetor #1903.
- INSTALLATION
Install bracket over carburetor throttle arm stud as shown in Figure 1. Use bolt, nut and washer supplied to attach.

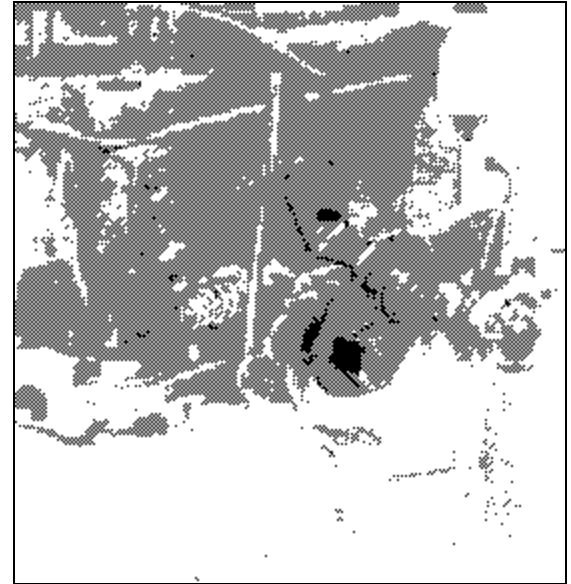


Figure 1
Throttle Kicker Bracket installed on Edelbrock Performer Q-Jet carburetor #1903 viewed from left (driver's) side.



- Please study these instructions carefully before installing your new Throttle Kicker kit. If you have any questions or problems, do not hesitate to contact our Technical Hotline at: (800) 416-8628 from 7:00 am to 5:00 pm, Monday through Friday, Pacific Standard Time or e-mail us at: edelbrock@edelbrock.com.
- APPLICATIONS
Edelbrock Throttle Kicker Bracket #1997 is an adapter to connect a factory vacuum operated throttle kicker to Edelbrock Q-Jet carburetor #1903. This applies to 1980-1985 350, 400 and 454 c.i.d. engines in 3/4 and one-ton trucks with heavy duty chassis and hot air choke. If original equipment carburetor has factory cruise control, use the original stud and nut instead of included hardware. Figure 1 shows typical installation on Q-Jet carburetor #1903.
- INSTALLATION
Install bracket over carburetor throttle arm stud as shown in Figure 1. Use bolt, nut and washer supplied to attach.

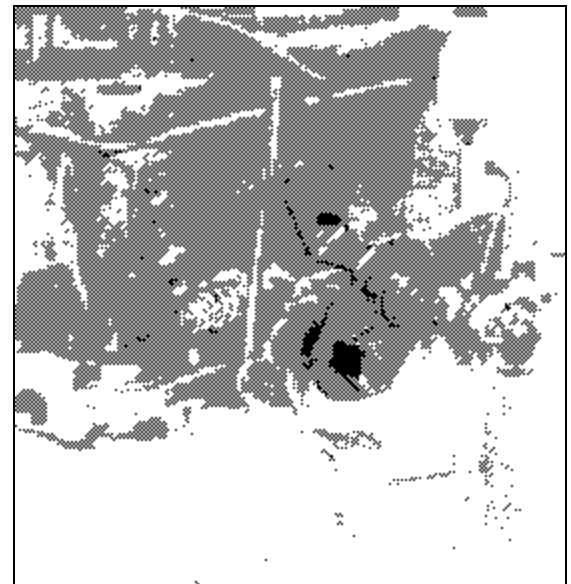


Figure 1
Throttle Kicker Bracket installed on Edelbrock Performer Q-Jet carburetor #1903 viewed from left (driver's) side.