

REVISIONS			
LTR	DESCRIPTION	DATE	APPROVED
	INITIAL RELEASE	08/25/06	
A	ADD INSTRUCTION PN	09/21/06	
B	ADD XIM TO XFI CAN WIRING NOTE	11/01/06	
C	CAN LAYOUT CHANGE. INTERCONNECT REMOVED.	02/05/07	
D	CAN TWIST NOTE.	04/12/07	
E	ADD TERMINATING RESISTOR VALUE NOTE.	01/15/08	

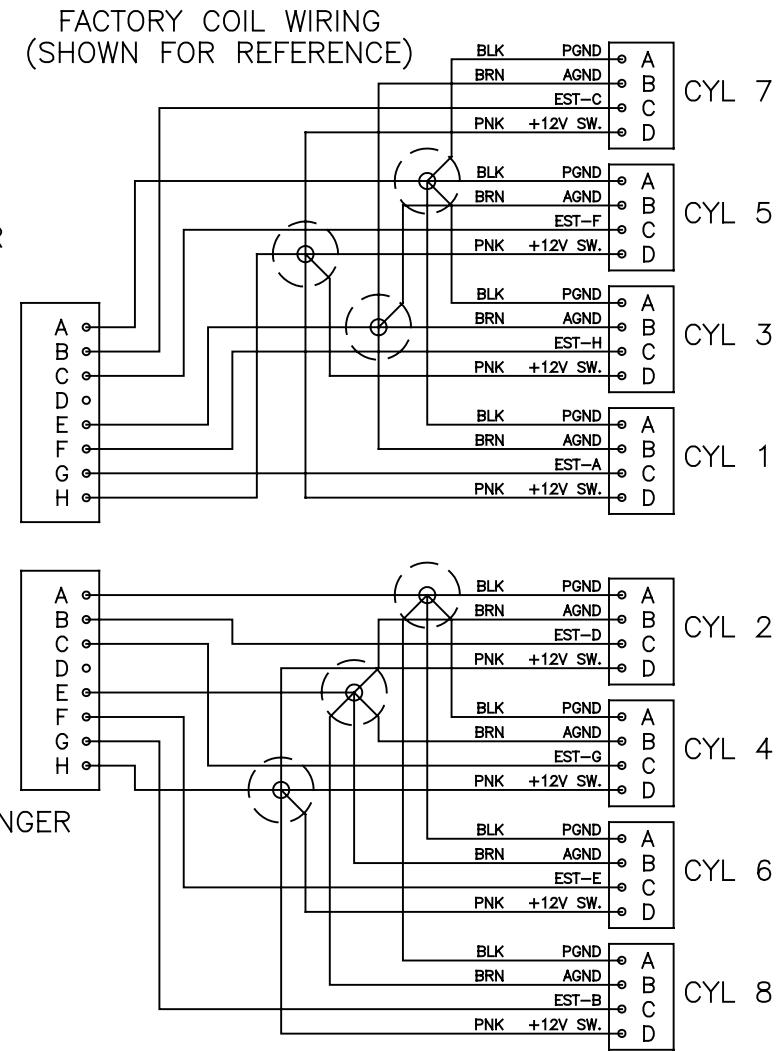
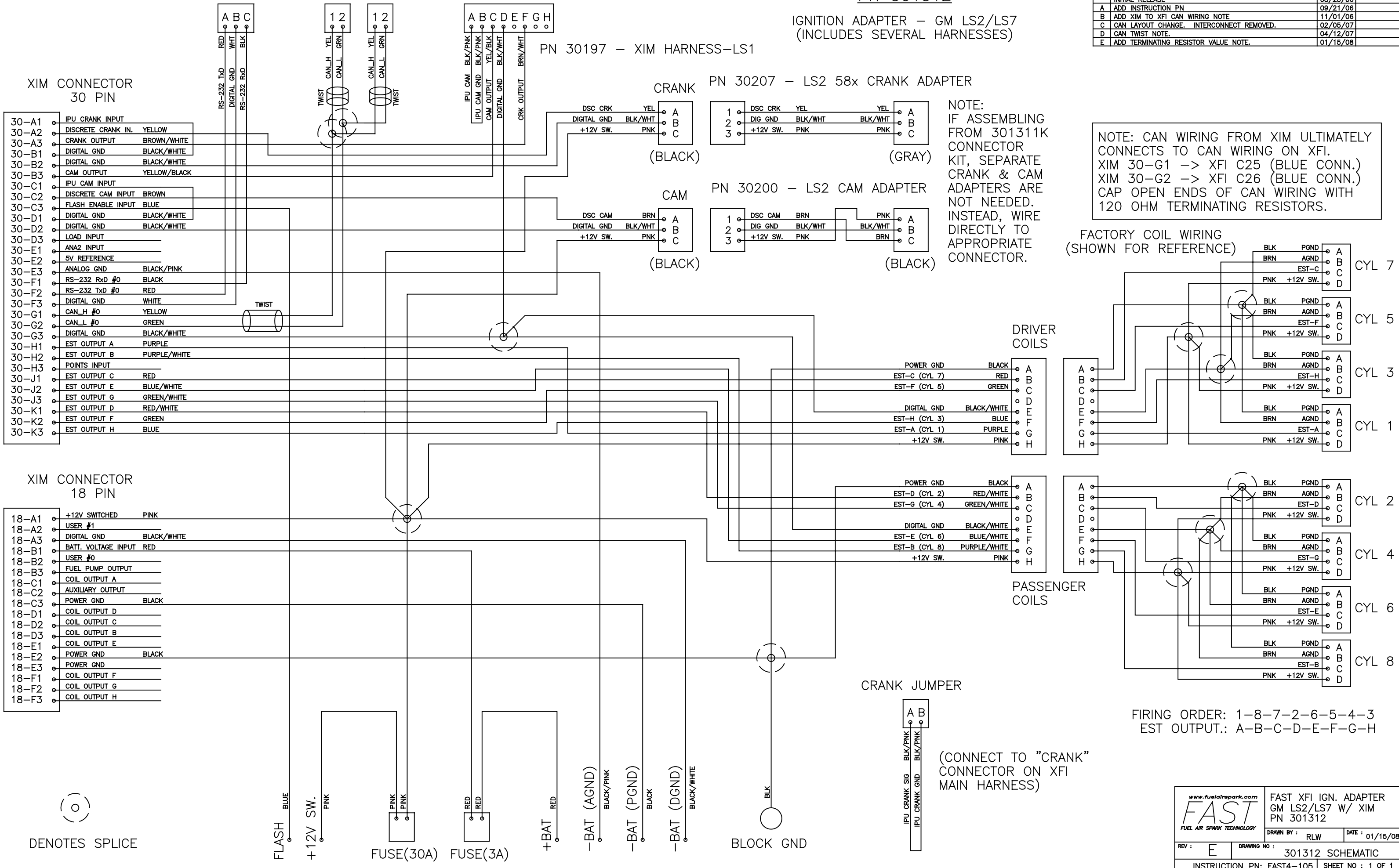
PN 30197 - XIM HARNESS-LS1

PN 30207 - LS2 58x CRANK ADAPTER

PN 30200 - LS2 CAM ADAPTER

NOTE:
IF ASSEMBLING FROM 301311K CONNECTOR KIT, SEPARATE CRANK & CAM ADAPTERS ARE NOT NEEDED. INSTEAD, WIRE DIRECTLY TO APPROPRIATE CONNECTOR.

NOTE: CAN WIRING FROM XIM ULTIMATELY CONNECTS TO CAN WIRING ON XFI.
XIM 30-G1 -> XFI C25 (BLUE CONN.)
XIM 30-G2 -> XFI C26 (BLUE CONN.)
CAN OPEN ENDS OF CAN WIRING WITH 120 OHM TERMINATING RESISTORS.



XIM CONNECTOR 30 PIN

- 30-A1 IPU CRANK INPUT
- 30-A2 DISCRETE CRANK IN. YELLOW
- 30-A3 CRANK OUTPUT BROWN/WHITE
- 30-B1 DIGITAL GND BLACK/WHITE
- 30-B2 DIGITAL GND BLACK/WHITE
- 30-B3 CAM OUTPUT YELLOW/BLACK
- 30-C1 IPU CAM INPUT
- 30-C2 DISCRETE CAM INPUT BROWN
- 30-C3 FLASH ENABLE INPUT BLUE
- 30-D1 DIGITAL GND BLACK/WHITE
- 30-D2 DIGITAL GND BLACK/WHITE
- 30-D3 LOAD INPUT
- 30-E1 ANA2 INPUT
- 30-E2 5V REFERENCE
- 30-E3 ANALOG GND BLACK/PINK
- 30-F1 RS-232 RxD #0 BLACK
- 30-F2 RS-232 TxD #0 RED
- 30-F3 DIGITAL GND WHITE
- 30-G1 CAN_H #0 YELLOW
- 30-G2 CAN_L #0 GREEN
- 30-G3 DIGITAL GND BLACK/WHITE
- 30-H1 EST OUTPUT A PURPLE
- 30-H2 EST OUTPUT B PURPLE/WHITE
- 30-H3 POINTS INPUT
- 30-J1 EST OUTPUT C RED
- 30-J2 EST OUTPUT E BLUE/WHITE
- 30-J3 EST OUTPUT G GREEN/WHITE
- 30-K1 EST OUTPUT D RED/WHITE
- 30-K2 EST OUTPUT F GREEN
- 30-K3 EST OUTPUT H BLUE

XIM CONNECTOR 18 PIN

- 18-A1 +12V SWITCHED PINK
- 18-A2 USER #1
- 18-A3 DIGITAL GND BLACK/WHITE
- 18-B1 BATT. VOLTAGE INPUT RED
- 18-B2 USER #0
- 18-B3 FUEL PUMP OUTPUT
- 18-C1 COIL OUTPUT A
- 18-C2 AUXILIARY OUTPUT
- 18-C3 POWER GND BLACK
- 18-D1 COIL OUTPUT D
- 18-D2 COIL OUTPUT C
- 18-D3 COIL OUTPUT B
- 18-E1 COIL OUTPUT E
- 18-E2 POWER GND BLACK
- 18-E3 POWER GND
- 18-F1 COIL OUTPUT F
- 18-F2 COIL OUTPUT G
- 18-F3 COIL OUTPUT H

DENOTES SPLICE



CRANK JUMPER

(CONNECT TO "CRANK" CONNECTOR ON XFI MAIN HARNESS)